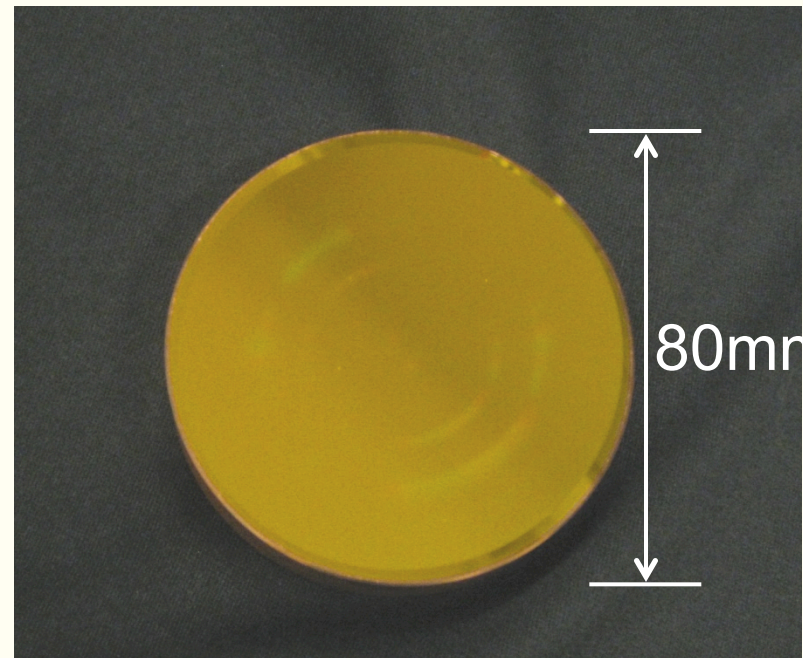
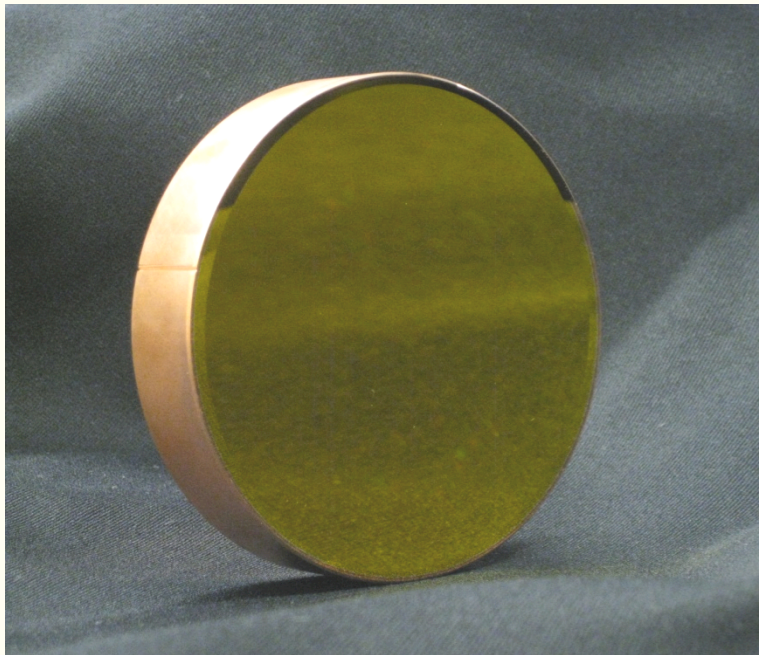


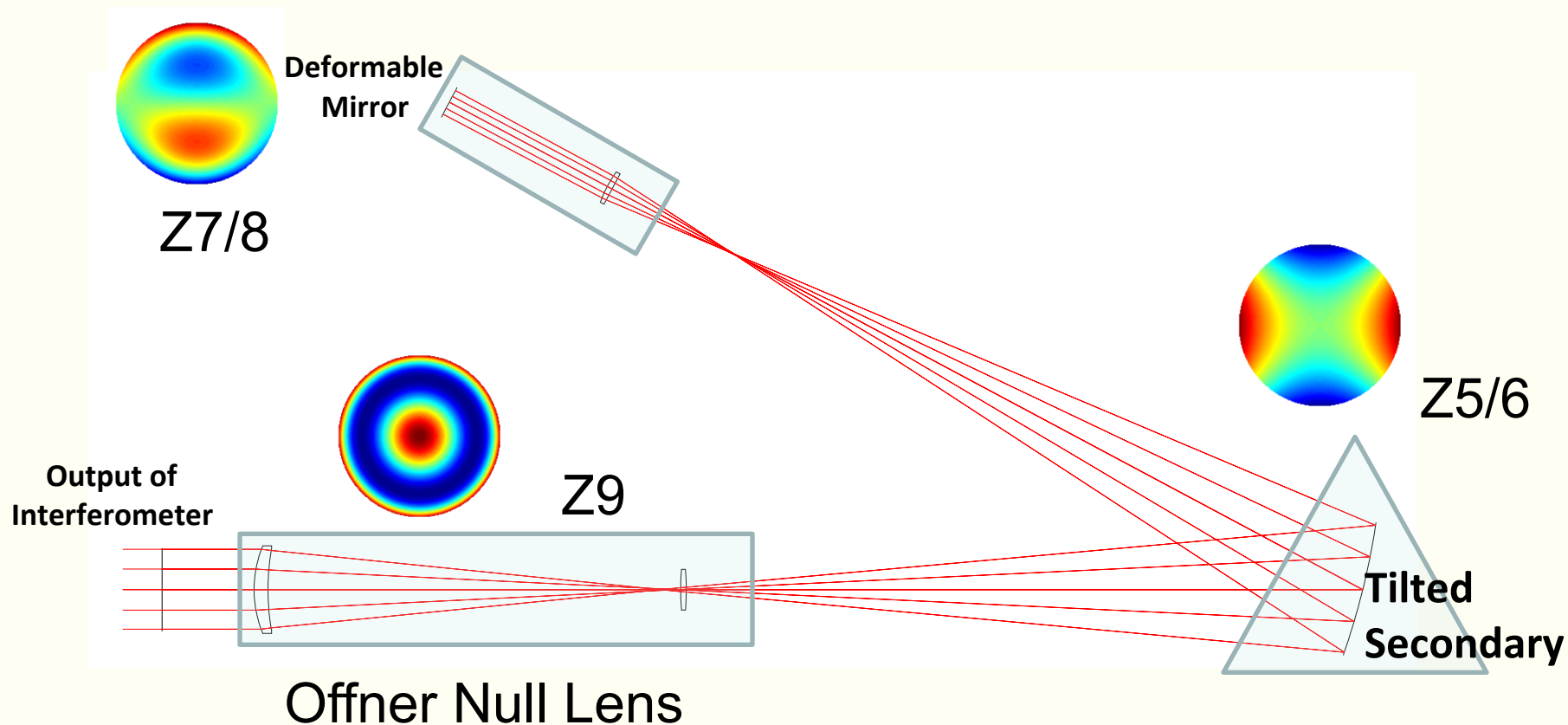
# Fabrication

- Secondary mirror has been diamond turned by **II-VI Inc.**
  - Copper Substrate (5:1 aspect ratio)
  - Gold coating



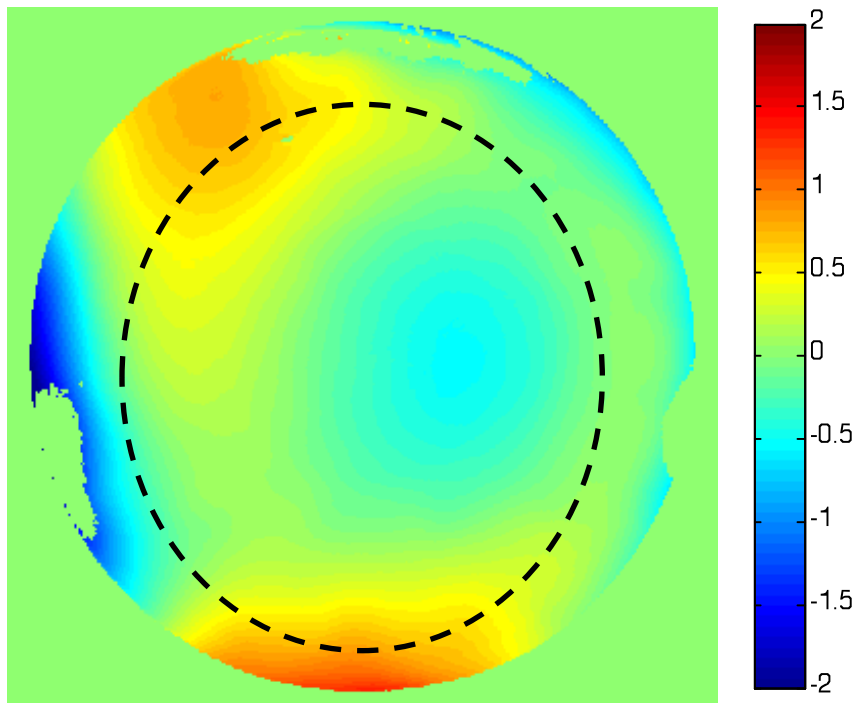
# Metrology for a $\phi$ -polynomial

Proposed acceptance testing/characterization configuration for the secondary mirror



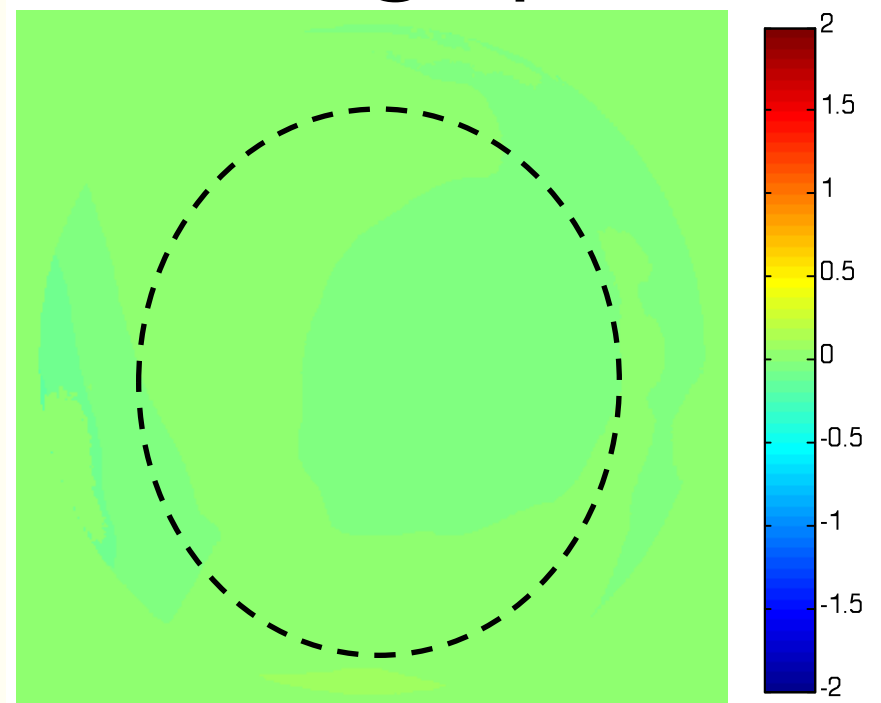
# Surface Form Error

Waves @ .633 $\mu\text{m}$



P-V =  $1.673\lambda$   
RMS =  $0.328\lambda$

Waves @ 10 $\mu\text{m}$



P-V =  $0.106\lambda$   
RMS =  $0.021\lambda$